



Cambridge Association of Neighborhoods (CAN) Survey

CWDI – Cambridge YMCA:
Community Assessment

Survey Overview

- **Survey Purpose:** Gather opinions from the community on relocation of the Y and Y Headquarters to Cambridge Harbor
- **636** Cambridge area participants responded over **9 days**
- **Survey Distribution:**
 - Operation Destination Cambridge (public, private) Facebook
 - Cambridge MD Facebook
 - Next Door (extended Cambridge locations)
 - CAN Website and email distribution
 - WMDT News (47-ABC) interview, website distribution
- **Survey Method:** Survey Monkey, anonymous, controlled single use, sliding scale (Q1), Open ended responses (Q2-Q4) were categorized for meaningful analysis.



Cambridge Association of Neighborhoods (CAN) Survey

CWDI - Cambridge YMCA: Community Assessment

Survey Purpose:

The purpose of this survey is to assess the community's opinion regarding the potential for a non-profit nonrevenue generating business, like the Cambridge YMCA, to occupy a portion of the CWDI waterfront property. Our understanding is the occupancy would also include the relocation of the "YMCA of the Chesapeake" Corporate Headquarters which is currently located on Dover Street in Easton, MD. Your feedback is important and confidential. Thank you in advance for participating.

About CWDI: cambridgeharbor.org

CWDI's is a non-profit development corporation formed by the City of Cambridge, Dorchester County, and the State of Maryland for the purposes of collaborative planning and development of properties along and adjacent to the Cambridge waterfront. CWDI's mission is to develop the Cambridge Waterfront in partnership with the community to create and sustainably maintain Cambridge Harbor as an inviting, accessible, active, and enjoyable place to live, work, play and visit.

About Cambridge YMCA: cambridgeymca.org

The mission of the Cambridge YMCA is to promote and inspire life-long development for children, adults and families through programs that build healthy spirit, mind, and body for all. The Y achieves this through a broad range of activities that serve a community rich in racial, religious, ethnic, and economic diversity.

CWDI -
Cambridge
YMCA:
Community
Assessment



I think the present location of the Y (201 Talbot Ave) serves the community well.

0 -not very well

(move the sliding bar)

100 - very well

Please specify any perceived **benefits** in moving the Y to the CWDI Waterfront property.

Please specify any perceived **drawbacks** in moving the Y to the CWDI Waterfront property.

Please include additional comments or concerns below.

This survey is brought to you by Cambridge Association of Neighborhoods (CAN).

About CAN: cambridgecan.org

The Cambridge Association of Neighborhoods (CAN) is a community organization whose mission is to encourage and assist all community members in being good neighbors. CAN works to enhance the safety, quality of life, and well-being of our residents. It promotes safe streets, code-compliant housing, cultural and social events, and community involvement in our city. It is open to renters and homeowners alike.

If you are not already a member of CAN please check out our website (cambridgecan.org) for more information. Membership is free.

Thank you again for participating in this survey!

CWDI -
Cambridge
YMCA:
Community
Assessment

Survey High Level Take Aways



84% feel current Y location serves the community well (Q1)



71% of respondents perceived there is no benefit in moving the Y (Q2)



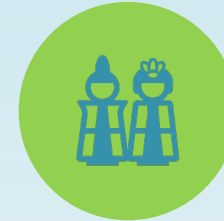
97% of respondents perceived drawbacks, i.e., lost tax revenue, opportunity cost, unfavorable location, other drawbacks. (Q3)



85% of respondents thought moving the Y is a bad idea overall (Q4)



15% of respondents were excited about the possibility of a new facility (Q2)

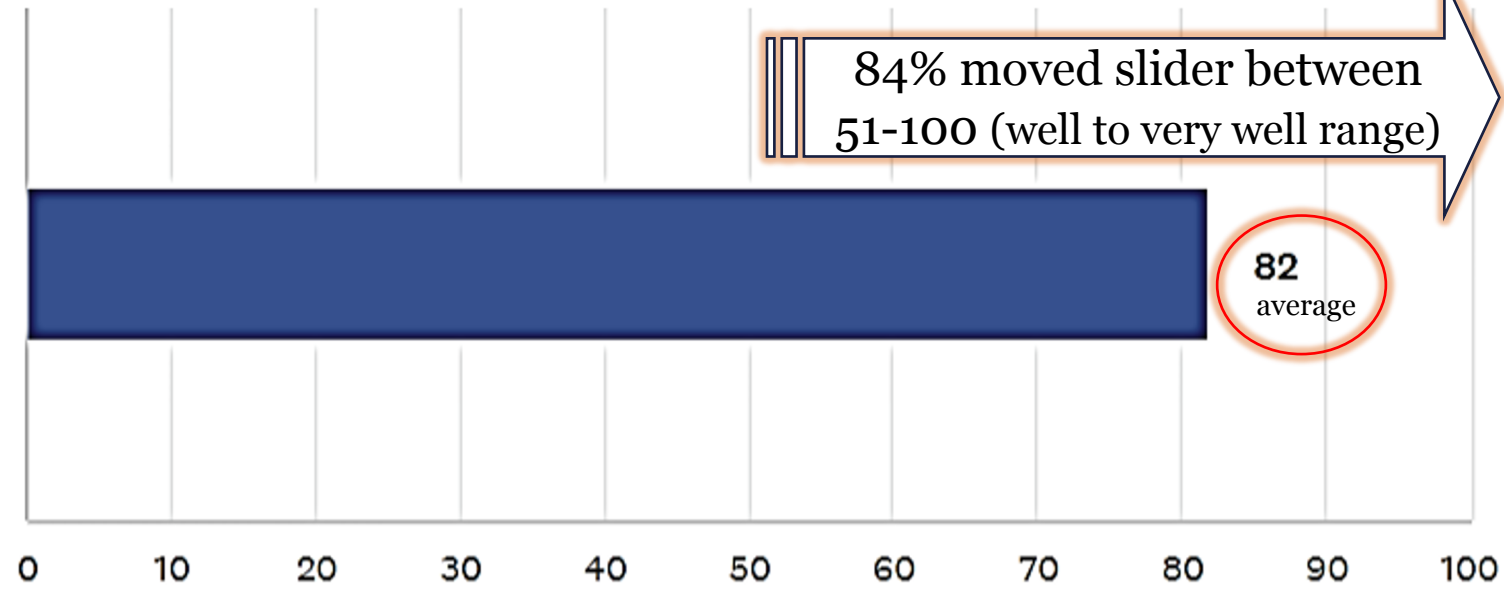


12% of respondents were excited about the new location (Q2)



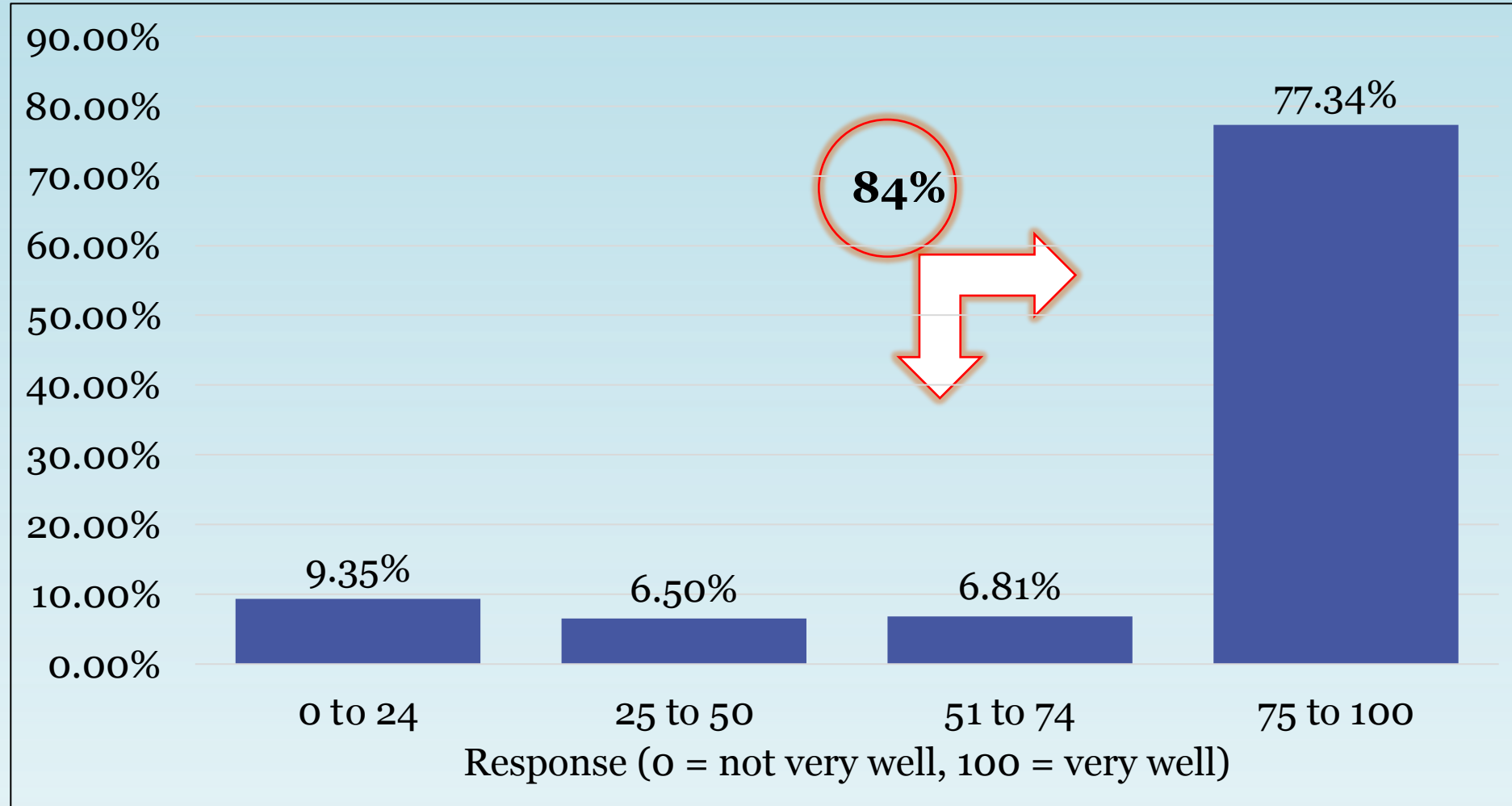
Response Details

Q1- I think the present location of the Y (201 Talbot Ave) serves the community well.

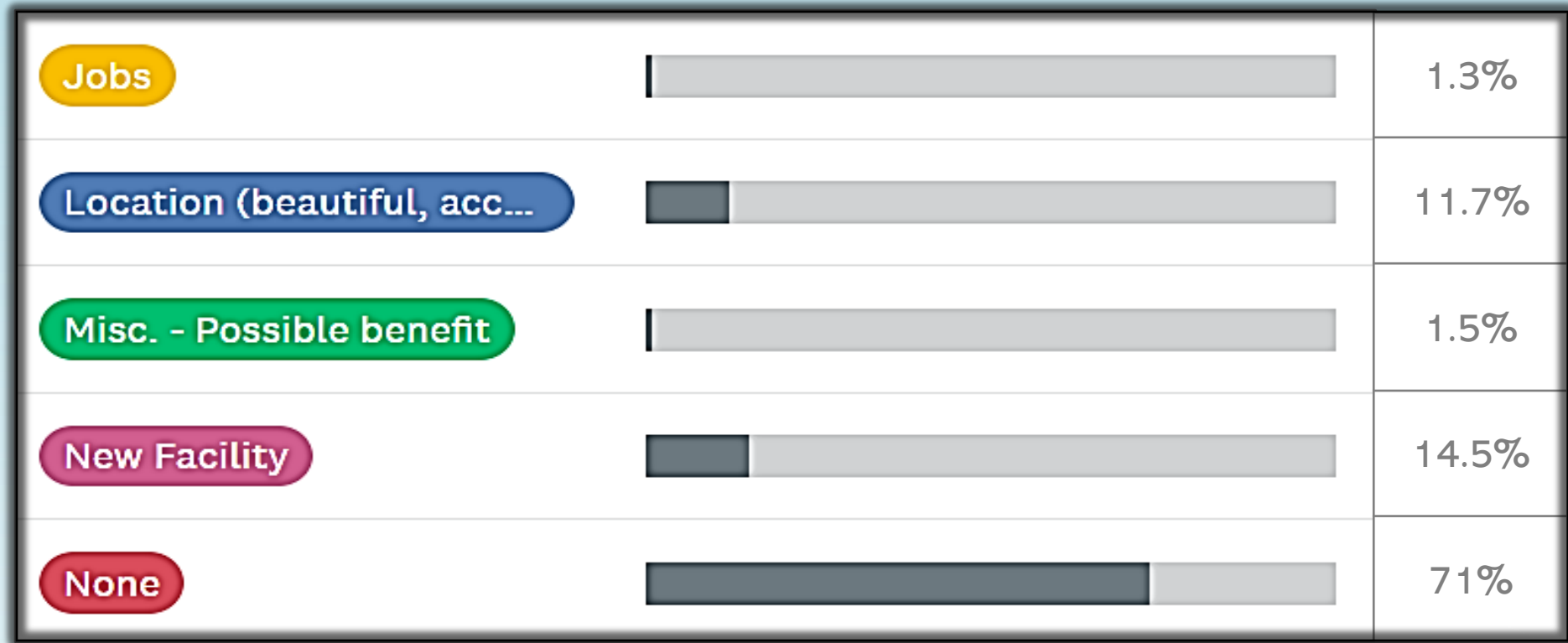


| ANSWER CHOICES | AVERAGE NUMBER | TOTAL NUMBER | RESPONSES |
|------------------------|----------------|--------------|-----------|
| Responses | 82 | 51,661 | 631 |
| Total Respondents: 631 | | | |

Q1- I think the present location of the Y (201 Talbot Ave) serves the community well.



Q2 - Please specify any perceived benefits in moving the Y to the CWDI Waterfront property.



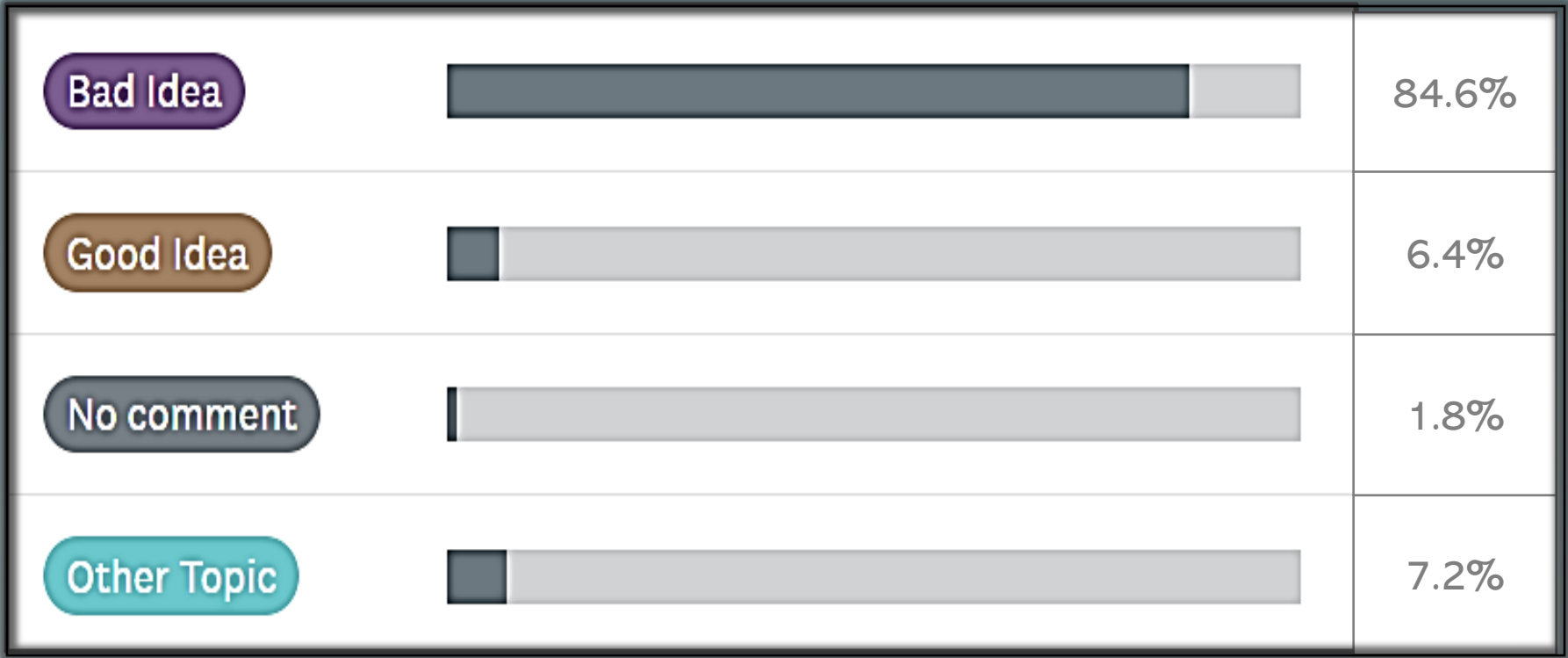
Display by Single Category

Q3 - Please specify any perceived drawbacks in moving the Y to the CWDI Waterfront property.



Display by Single Category

Q4 - Please include additional comments or concerns below.



Display by Single Category